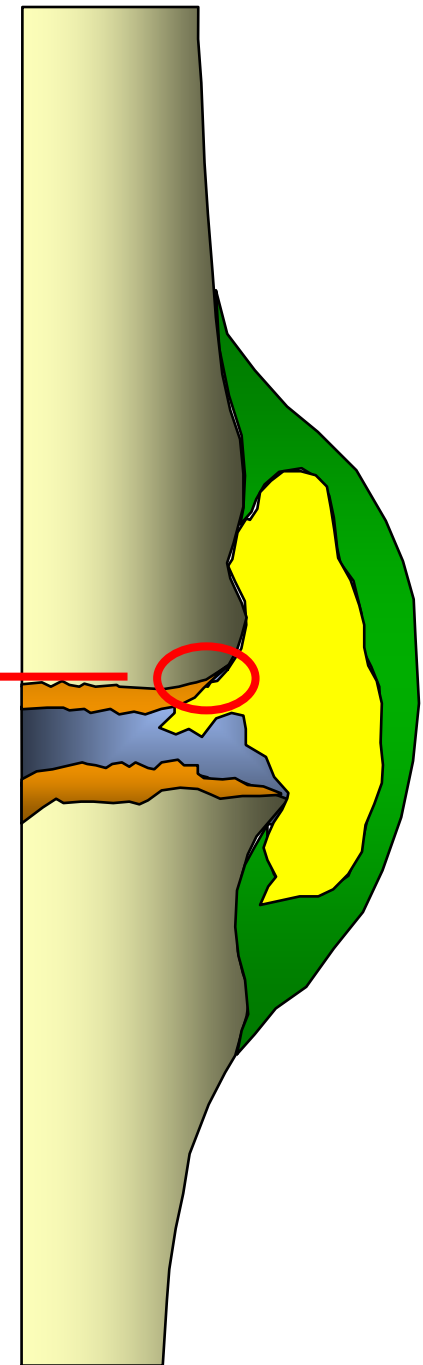
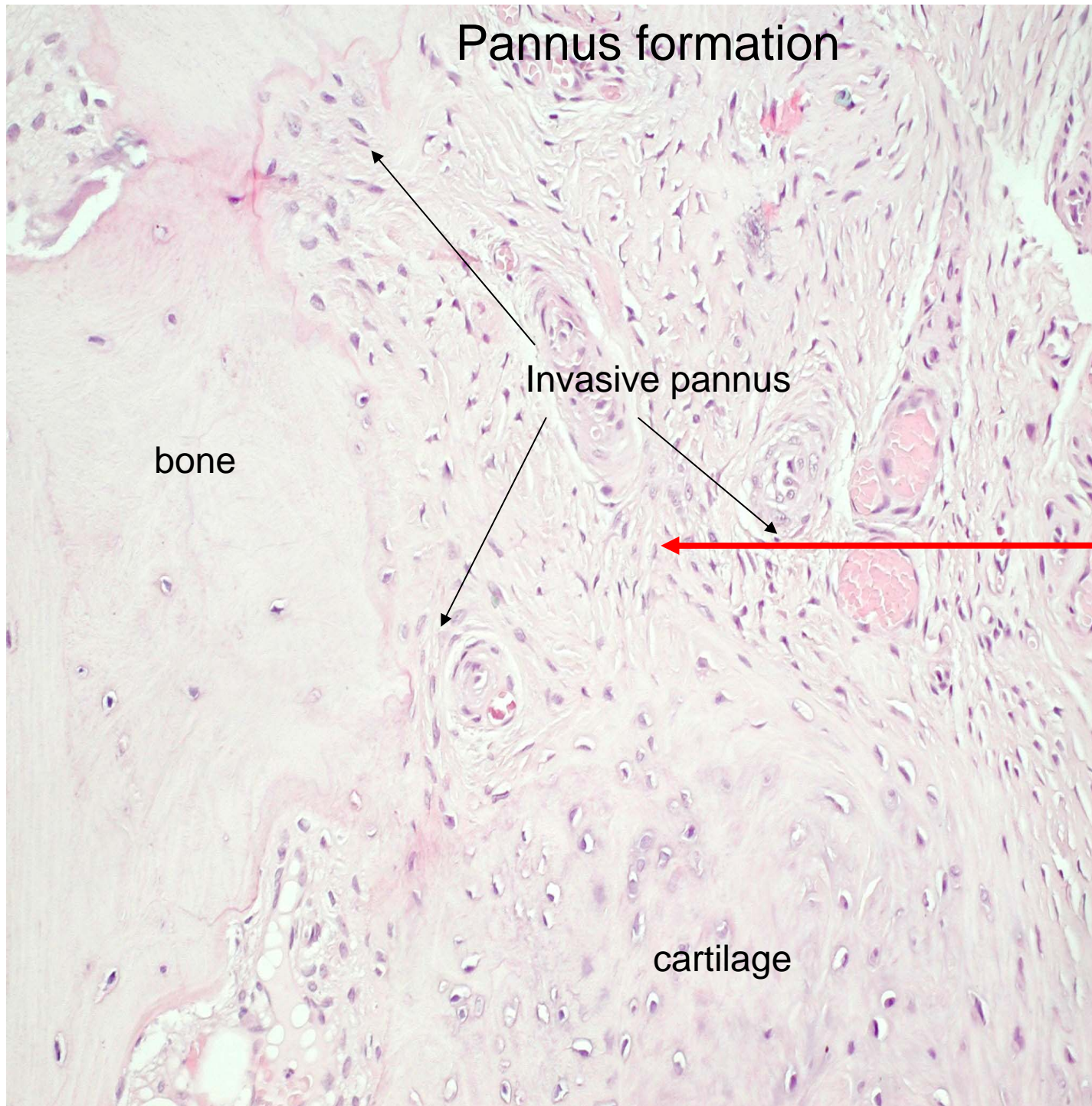
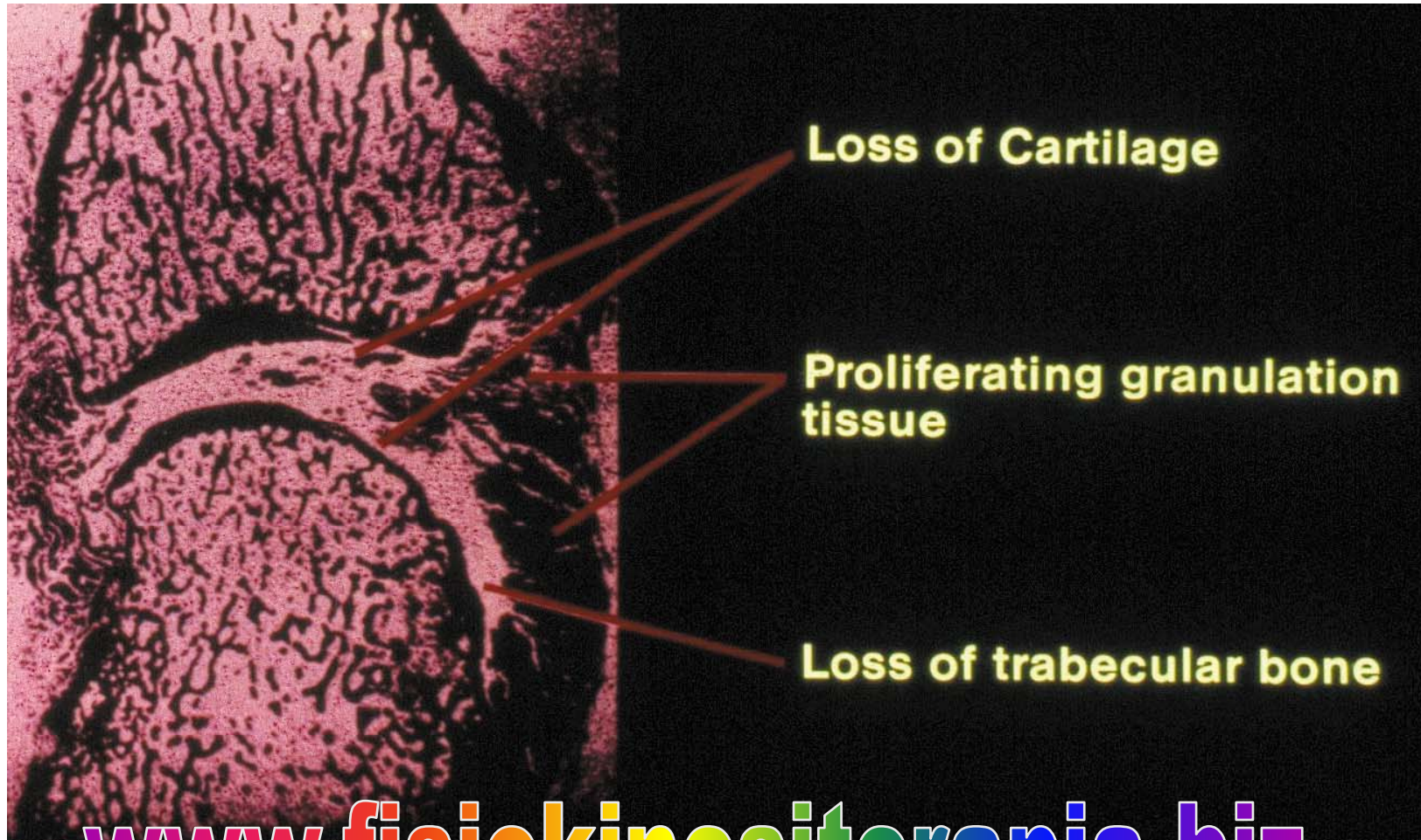


Artrite reumatoide

- **malattia infiammatoria cronica, multifattoriale, immuno-mediata**
- **prevalenza compresa tra 0.3 e 1%; M:F 1:3; colpisce tutte le età; picco di incidenza 50 anni**
- **colpisce elettivamente la membrana sinoviale delle articolazioni diartrodiali, delle guaine tendinee e delle borse sierose**
- **la sinovite cronica provoca erosioni cartilaginee e ossee, rotture tendinee e legamentose con conseguente deformità e invalidità**
- **Possibili manifestazioni sistemiche , talora gravi, inclusa aterosclerosi accelerata**
- **Caratteristiche salienti: poliartrite cronica simmetrica, erosioni ossee Rx, positività del fattore reumatoide e degli anticorpi anti-peptidi citrullinati**



Joint damage in Rheumatoid Arthritis



www.fisiokinesiterapia.biz

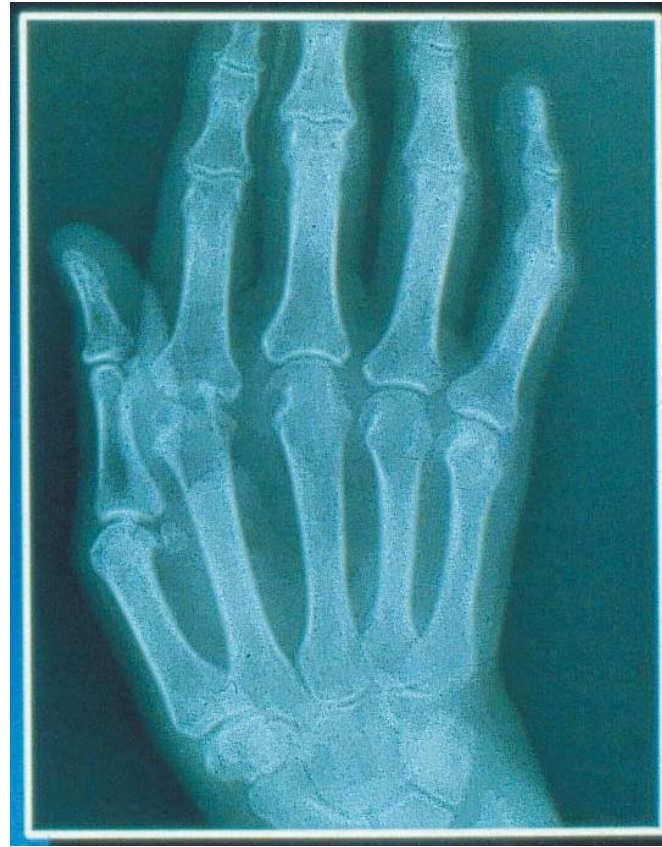
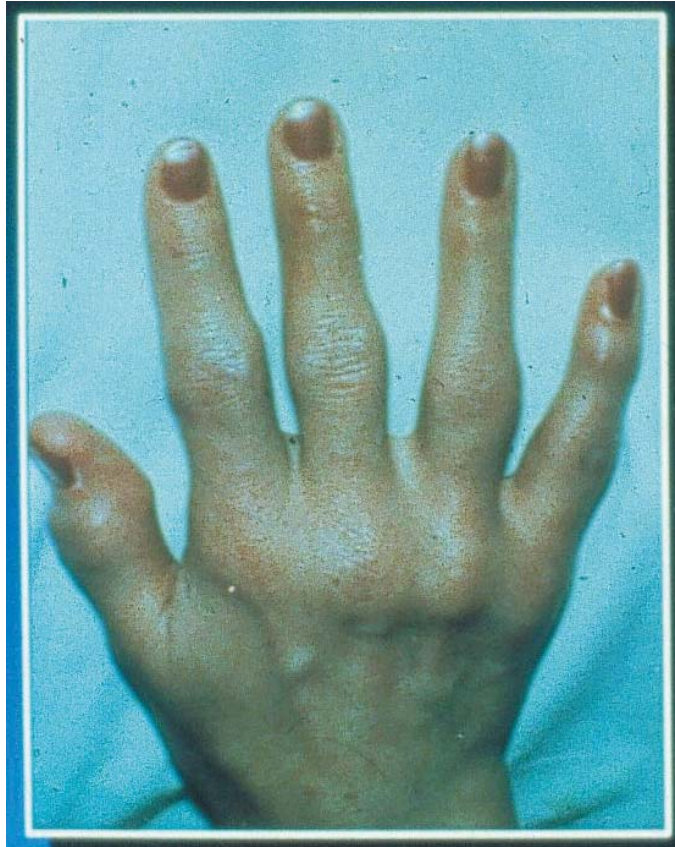
American College of Rheumatology 1987 Criteria for the Classification of Rheumatoid Arthritis

1. Morning stiffness
2. Arthritis of 3 or more joint areas
3. Arthritis of hand joints (wrists, MCPs, PIPs)
4. Symmetric arthritis
5. Rheumatoid nodules
6. Serum rheumatoid factor
7. Radiographic changes

•For classification purposes, a patient shall be said to have rheumatoid arthritis if he/she has satisfied at least 4 of these 7 criteria. Criteria 1 through 4 must have been present for at least 6 weeks. Patients with 2 clinical diagnoses are not excluded.

Arnett FC, et al. Arthritis Rheum 1988

ARTRITE REUMATOIDE (3 anni dall'esordio)



www.fisiokinesiterapia.biz

ARTRITE REUMATOIDE (13 anni dall'esordio)



ARTRITE REUMATOIDE

(3 mesi dall'esordio)

