

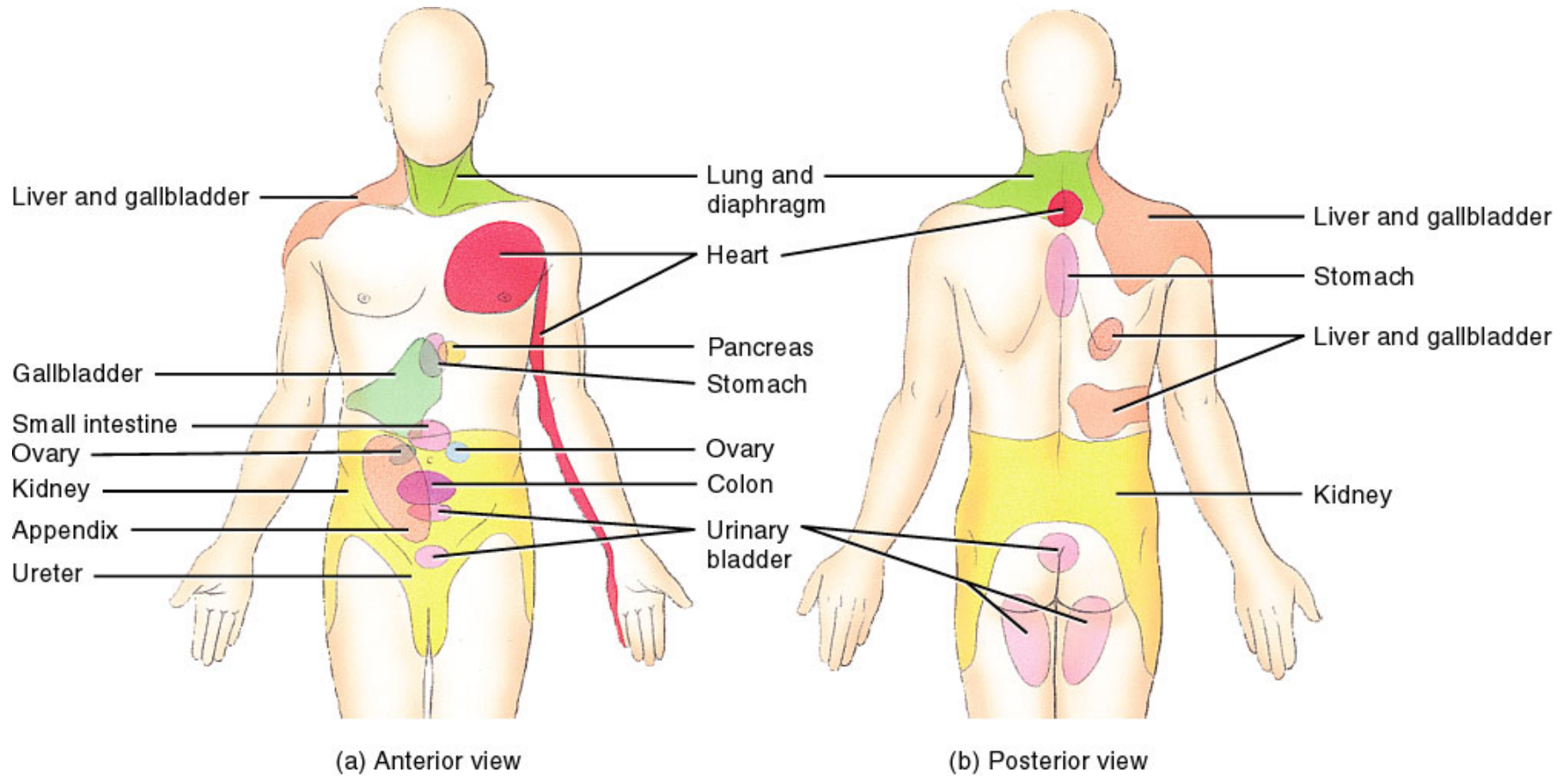
www.fisiokinesiterapia.biz

Sensory, Motor and
Integrative Systems

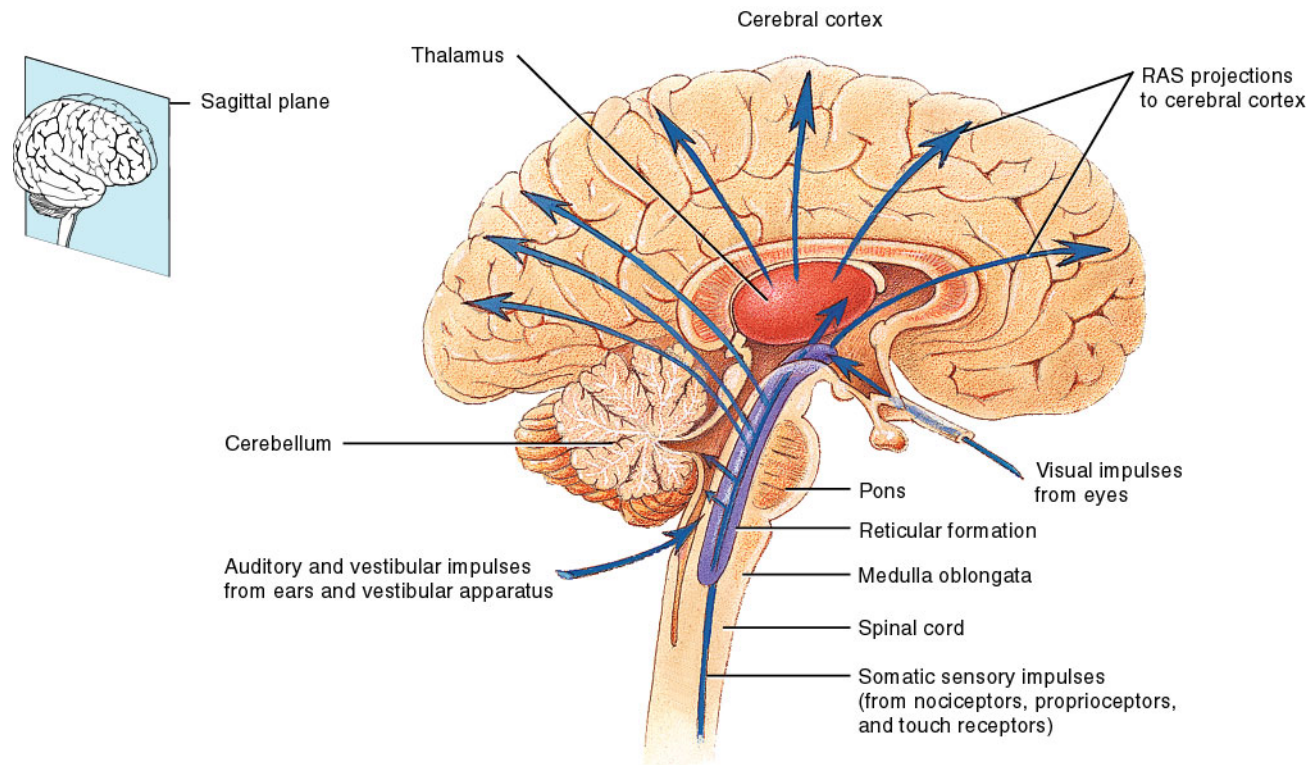
Receptors

- Exteroceptors – near the body surface
- Interoceptors – in blood vessels, viscera
- Proprioceptors – in muscles, tendons, joints
- Mechanoreceptors – detect pressure
- Thermoreceptors - temperature
- Nociceptors – physical or chemical change
- Photoreceptors - light
- Chemoreceptors - chemicals
- Osmoreceptors – pressure of body fluids
- Baroreceptors – blood pressure

Referred Pain

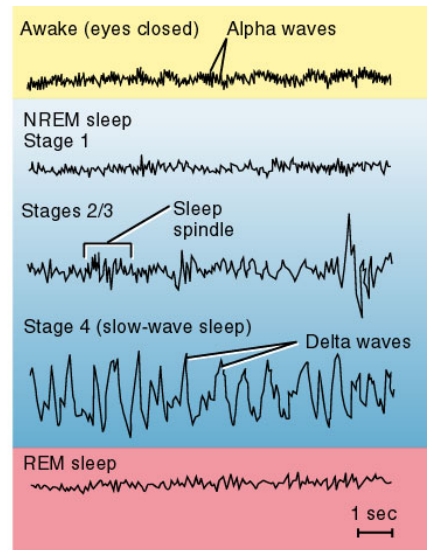


Reticular Activating System

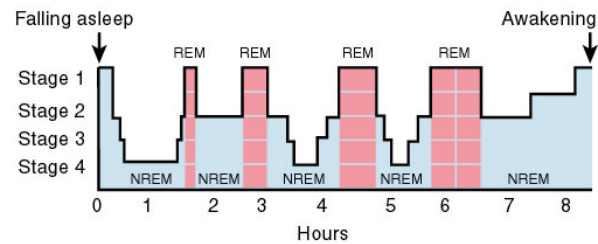


Sagittal section through brain and spinal cord

Sleep Patterns



(a) EEG waves during sleep stages



(b) Pattern of NREM and REM sleep over one sleep period

Terms

- Learning and Memory
- Paraplegia
- Hemiplegia
- Quadraplegia
- Parkinson's Disease
- Coma
- Insomnia
- Narcolepsy
- Sleep apnea
- Phantom pain