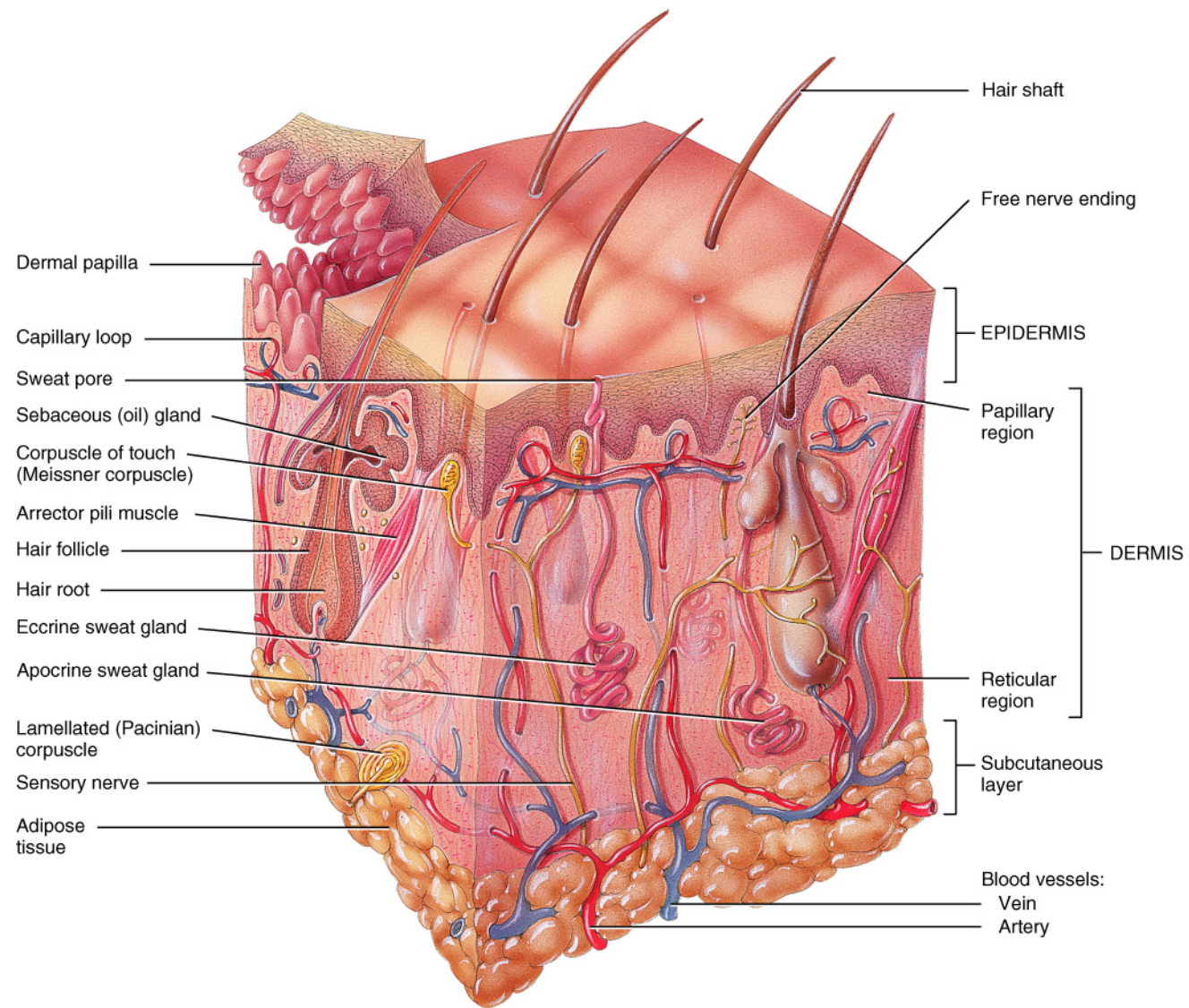
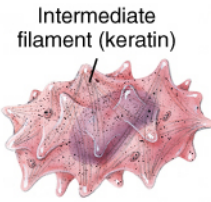


www.fisiokinesiterapia.biz

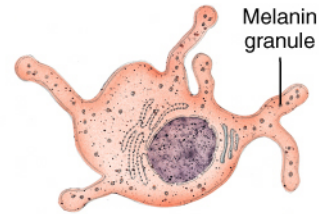
Integumentary System



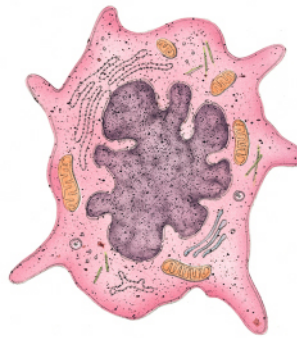
Epidermal Cells



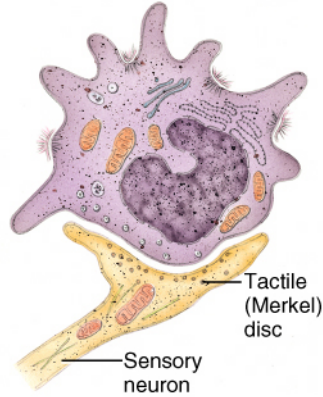
(a) Keratinocyte



(b) Melanocyte

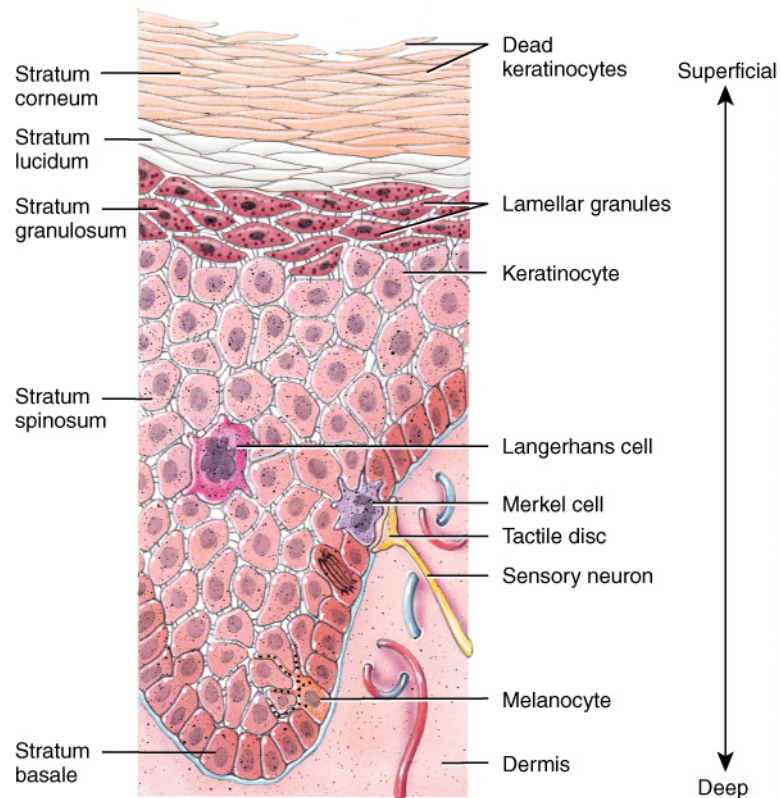


(c) Langerhans cell

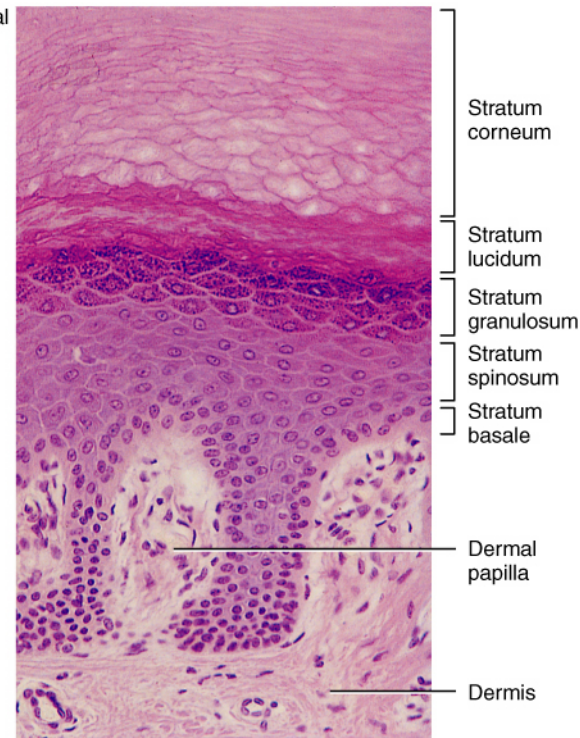


(d) Merkel cell

Layers of the Epidermis



(a) Four principal cell types in epidermis

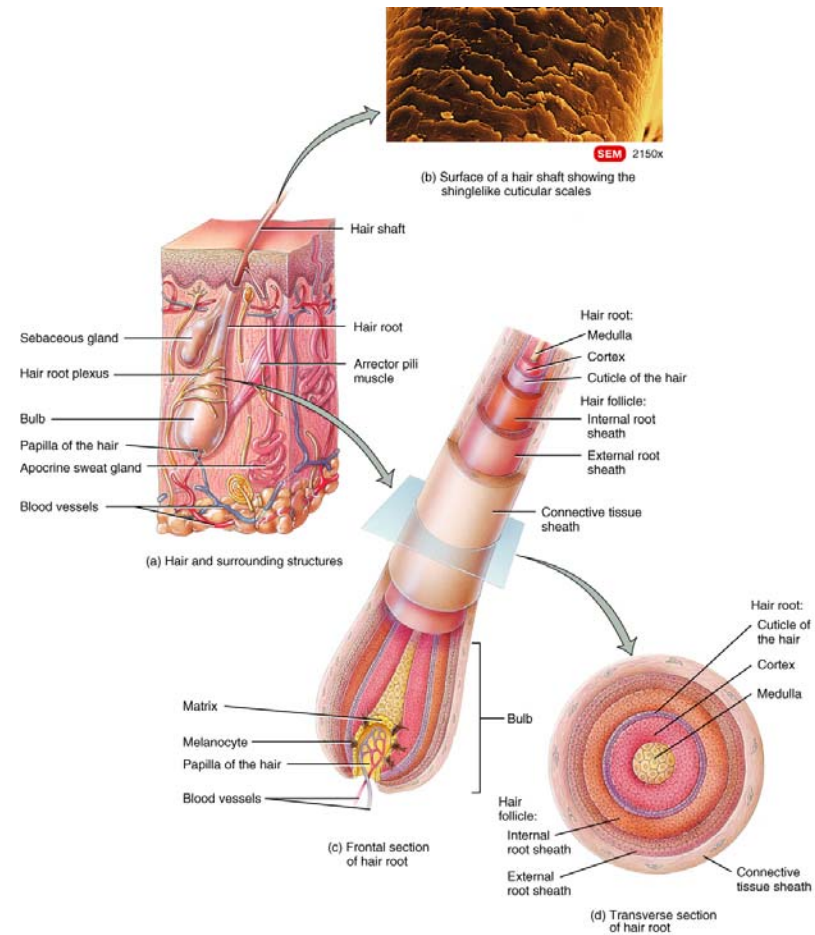


(b) Photomicrograph of a portion of skin

Parts of the Dermis

- **Pacinian corpuscles – pressure**
- **Hair follicles**
- **Sweat glands**
- **Blood vessels**
- **Arrector pili muscles**

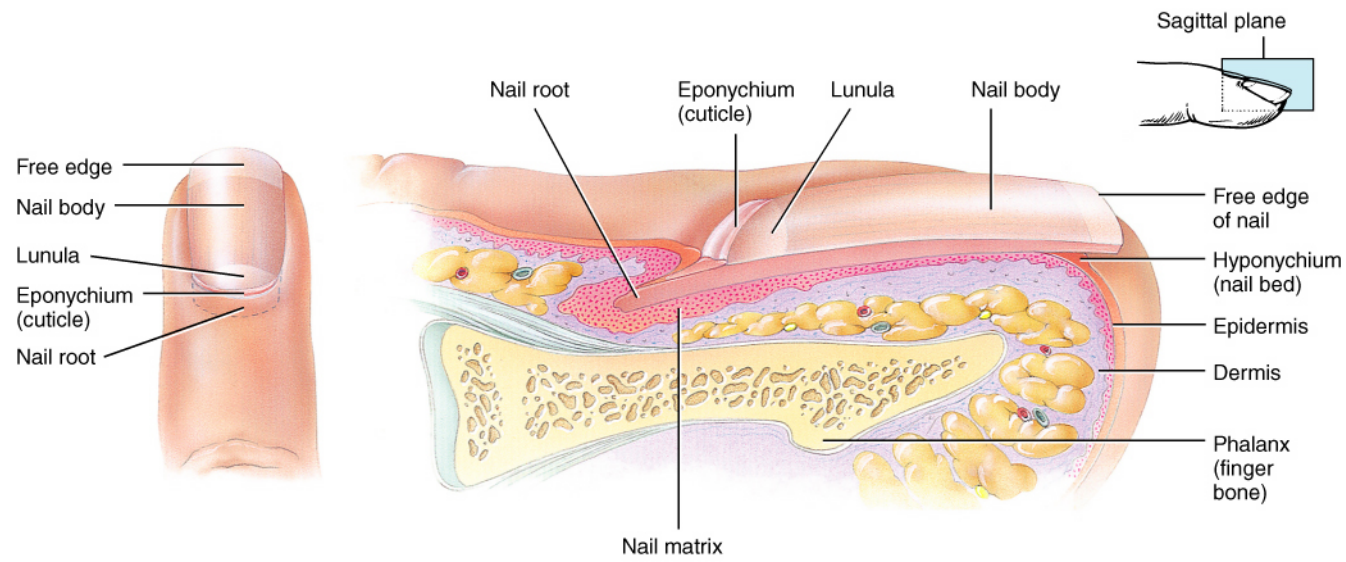
Hair



Glands

- Eccrine sweat glands: function throughout life.
- Apocrine: located in the axilla, groin, areolae, and beard areas. Begin functions at puberty.
- Ceruminous glands – wax in the ears.

Fingernails



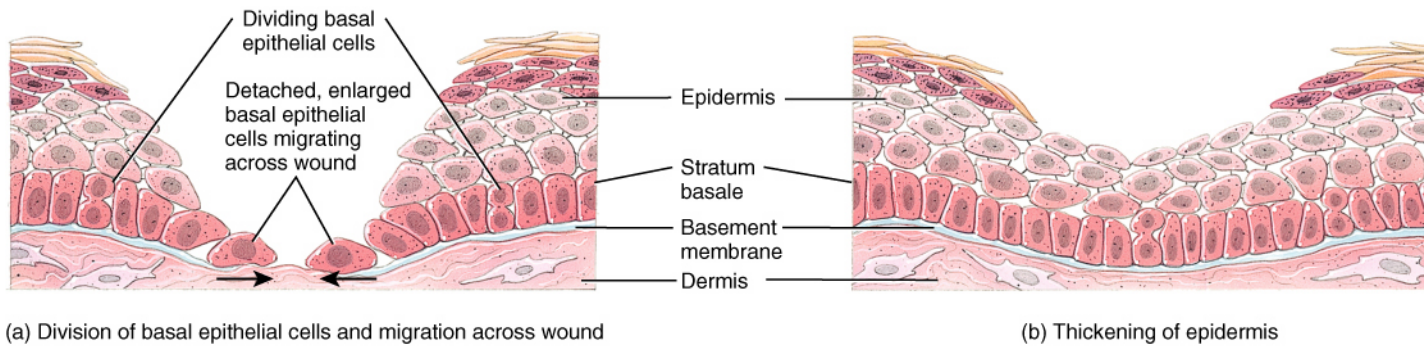
(a) Dorsal view

(b) Sagittal section showing internal detail

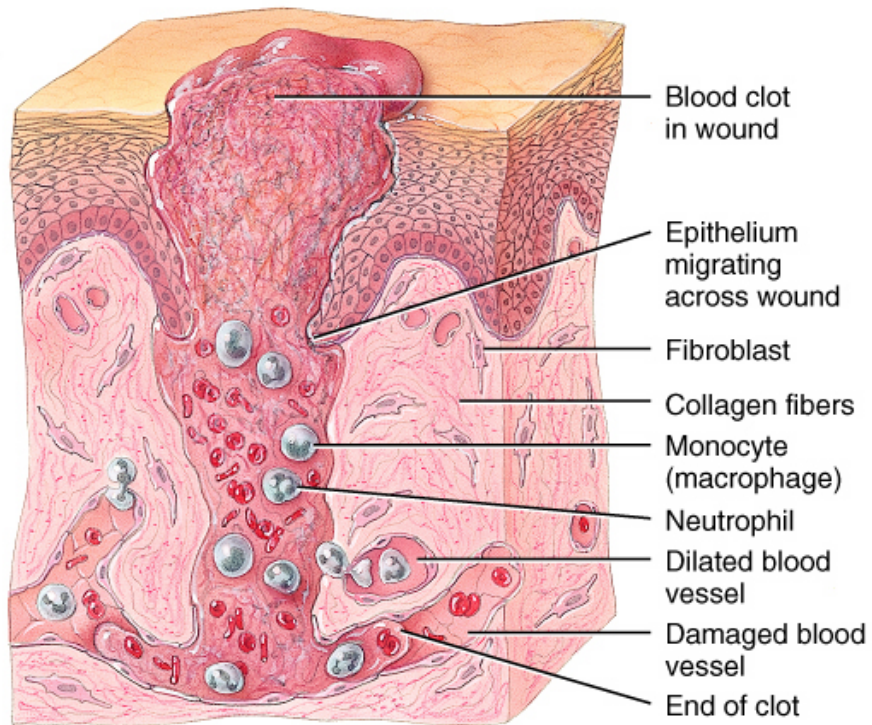
05.05

www.fisiokinesiterapia.biz

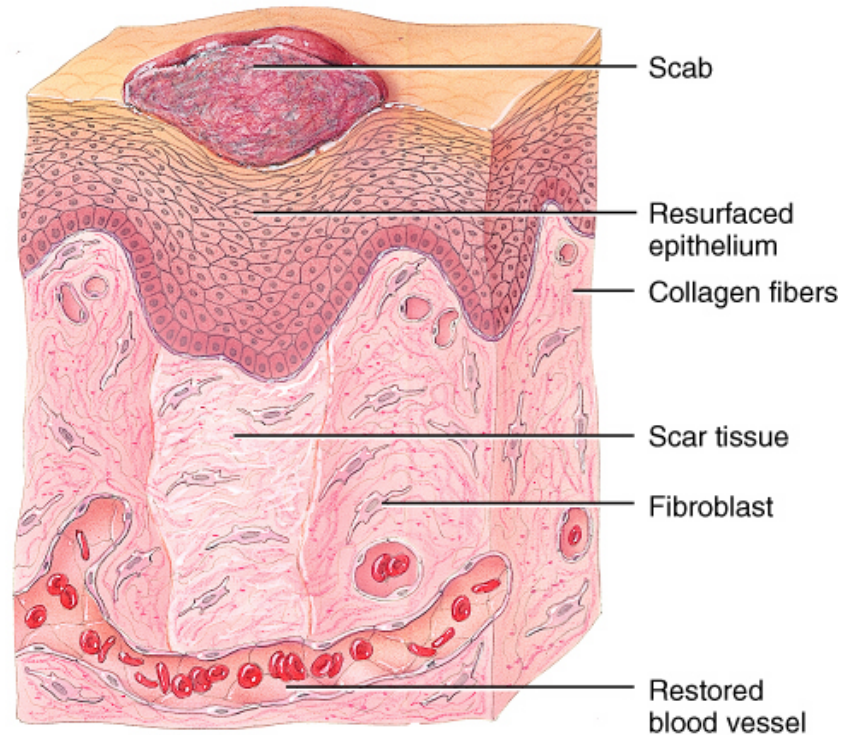
Epidermal wound healing



Deep wound healing



(a) Inflammatory phase



(b) Maturation phase

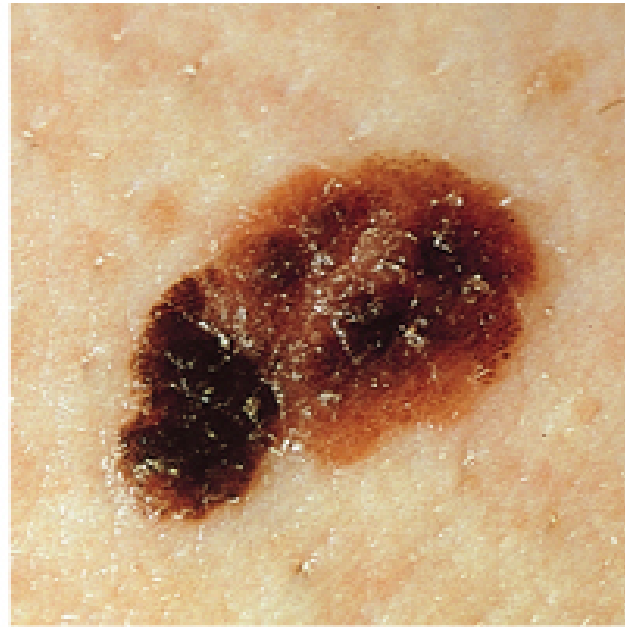
Deep wound healing

05.07

Skin cancers



(a) Normal nevus (mole)

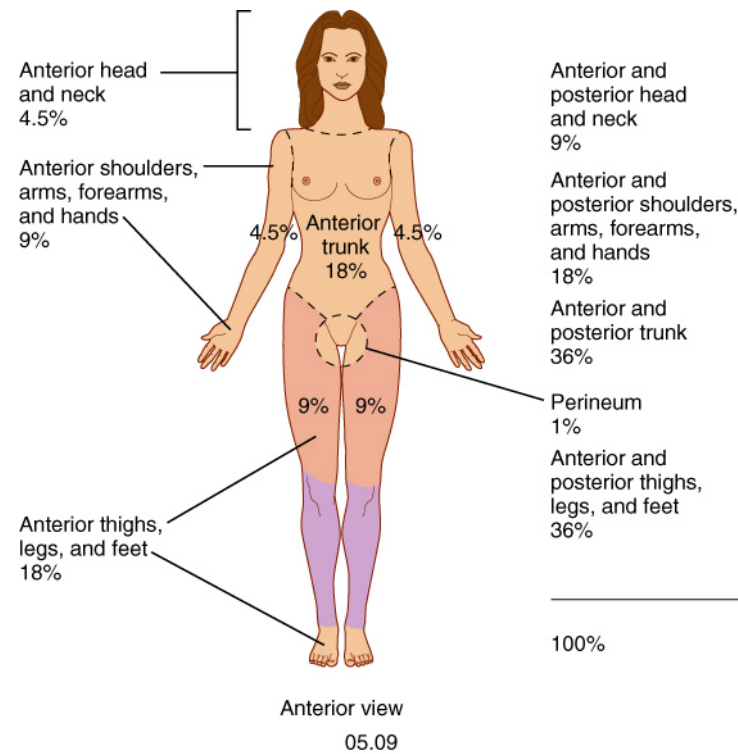


(b) Malignant melanoma

Types of Skin Cancers

- Malignant Melanoma
- Basal Cell Carcinoma
- Squamous Cell Carcinoma

Burn chart



Words to Know

- Hemangioma
- Impetigo
- Laceration
- Nevus
- Pruritis
- Wart